



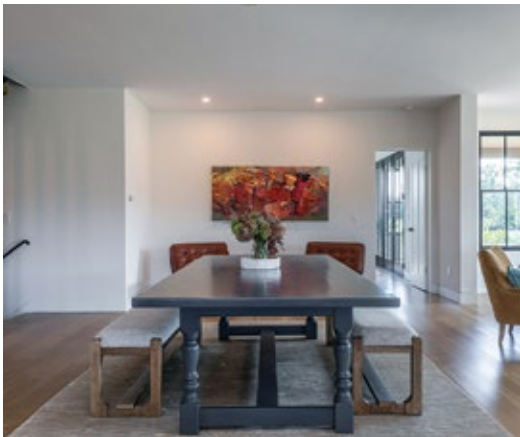
NEW CONSTRUCTION WITH MAJOR VIEWS

Salisbury, Connecticut

KLEMM REAL ESTATE_{Inc}
LITCHFIELD COUNTY'S PREMIER BROKERS

New Construction with Major Views, Salisbury, CT

Rare New Construction with Major Western & Big Sky Views. 4 Bedrooms, 4.5 Baths with an Open Floor-plan & Modern Edge, this Property is Unmatched. Main Level Primary Bedroom with Large Closet & Full Bath. 3 En-Suite Bedrooms Up Share Family Room with Gas Fireplace & Monster Views. Large Refined Eat-in Kitchen. Screened Porch. Private Office. 6.1± Pastoral Acres in the Coveted Taconic Area Nestled Among Expansive Estates & Luxury Homes, this Property is Just Minutes from Twin Lakes, Salisbury Village Center, Area Prep Schools; and Great Barrington, MA.. Heated Gunite Pool. Separate 2-Car Garage.



Property Features

- Major Western Views
- Heated Pool
- Screen Porch
- 1st Floor Primary
- Detached 2-Car Garage
- Open Floor Plan

#1 for Selling & Renting Fine Country Properties!

KLEMM REAL ESTATE Inc
LITCHFIELD COUNTY'S PREMIER BROKERS

Lakeville/Salisbury 860.435.6789 > Litchfield 860.567.5060 > New Preston 860.868.0505
Roxbury 860.354.3263 > Sharon 860.364.5993 > Washington Depot 860.868.7313 > Woodbury 203.263.4040

klemmrealestate.com

Property Data

88 Hammertown Road
Salisbury, CT

9	4	4/1	5,100	6.28±
RMS	BEDS	BATHS	SQFT	ACRES

Price: Upon Request

Listing Agent: Graham Klemm
860.868.7313 Ext. 114

All Data to be confirmed by Buyer.