

THE ONLY LITCHFIELD COUNTY INTERNATIONAL PROPERTY AWARD WINNER YEAR AFTER YEAR 2003-2023

Head for the Hills!

Private Estate • Washington, Connecticut • \$11,000,000



Private Estate, 4 Bedroom Converted Barn Main House. Separate 2 Bedroom Guesthouse. Pool. Ponds. Stonewalls. Meadows. Distant Views. 104± Acres. **Carolyn Klemm. Peter Klemm. 860.868.7313.**

Totally Private • South Kent, Connecticut • \$3,250,000



Totally Private Shingle-Style. 4 En Suite Bedrooms. Fireplace. 2-car Garage. Outbuilding. Coveted Location. 31.96± Acres. **Graham Klemm. Carolyn Klemm. 860.868.7313.**

Candlewood Waterfront • New Milford, Connecticut • \$2,895,000



Candlewood Lake Direct Waterfront. 4 Bedrooms. 2 Fireplaces. Bright & Open Floor Plan. Pool. Spa. Sandy Beach. Dock. 0.85± Acres. **Joseph Lorino. 860.868.7313. Cleve Fuessenich. 860.567.5060.**

LUXURY VACATION COLLECTION

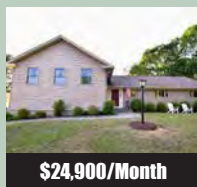
Summer Rentals in Litchfield County, Connecticut



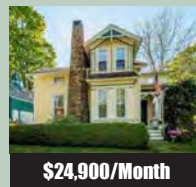
\$26,900/Month



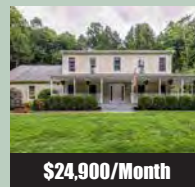
\$24,900/Month



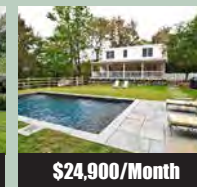
\$24,900/Month



\$24,900/Month



\$24,900/Month



\$24,900/Month



\$24,900/Month



\$15,900/Month

