



KLEMM REAL ESTATE Inc
LITCHFIELD COUNTY'S PREMIER BROKERS

PETER KLEMM

2015 YEAR-TO-DATE LISTINGS AND SALES

www.klemmrealestate.com

PRIVATELY LISTED & SOLD HIGHEST SALE LAKE WARAMAUG EVER



HIGHEST SALE LITCHFIELD COUNTY 2015

ASK \$12.5m

NEW PRESTON. Lake Waramaug Estate. Private Peninsula. 5± Acres. Floating Docks. Close Proximity to New York City.

EXCLUSIVELY LISTED



CONTRACT SIGNED

ASK \$5.0m

WASHINGTON. Impeccable Reconstructed Barn. 2 Bedrooms. Pool. Patio. Barn/ Garage. Pond. Views. 67± Acres.

EXCLUSIVELY LISTED



SOLD

ASK \$4.5m

NEW PRESTON. Lake Waramaug Compound. Pool. Boathouse. 500' Lake Waramaug Frontage. Dock. 6± Acres.

PRIVATELY LISTED & SOLD



ASK \$3.5m

LAKE WARAMAUG. New Luxury Home on Prime West Shore Road. Level Waterfront. Dock.

EXCLUSIVELY LISTED & SOLD



ASK \$2.995m

WASHINGTON. Quintessential Country Property. Antique Colonial. Coveted Location. More Land Available. 3.63± Acres.

EXCLUSIVELY LISTED & KLEMM SOLD



ASK \$2.595m

SOUTHBURY. Lake Lillinah Waterfront. 5 Bedrooms. Hot Tub. Dock. Private Cove. Brook. 5-car Garaging. 1.86± Acres.

EXCLUSIVELY LISTED & SOLD



ASK \$2.2m

NEW PRESTON. Chic Remodeled Contemporary. 3 Bedrooms. Barn. Walking Trails. Views. Privacy. 37± Acres.

PRIVATELY LISTED & SOLD



ASK \$2.2m

NEW PRESTON. Direct Waterfront. Lake Waramaug Boathouse. Dock. Sought-after Location.

KLEMM LISTED & PETER SOLD



ASK \$1.395m

WASHINGTON. Sleek Country House. 2 Bedrooms. Open Floor Plan. Pool. Barn. Distant Views. 4.11± Acres.

EXCLUSIVELY LISTED & SOLD



ASK \$1.75m

WASHINGTON. 67± Prime Acres on Coveted Street. Pumpkin Patch. Views.

EXCLUSIVELY LISTED & SOLD



ASK \$1.5m

WASHINGTON. 16± Prime Acres with Barn. Spectacular Views. Open Meadows.

PETER SOLD



ASK \$550k

NEW PRESTON. Turn-of-the-Century Commercial Building Located in New Preston Village.

www.klemmentals.com

COME LET US SHOW YOU!



#1 for Selling & Renting Fine Country Properties!

KLEMM REAL ESTATE Inc

Litchfield County's Premier Brokers

PETER KLEMM EXCLUSIVES!

www.klemmrealestate.com

PETER KLEMM EXCLUSIVE



ASK \$7.95m

WASHINGTON. Lake Waramaug Stone & Shingle-style House. 4 Bedrooms. Floating Dock. Views. 1.12± Acres.

PETER KLEMM EXCLUSIVE



ASK \$6.5m

WASHINGTON. Stunning Ultra Luxe Contemporary. 5 Bedrooms. Pool. Tennis Court. Total Privacy. 19± Acres.

PETER KLEMM EXCLUSIVE



ASK \$6.25m

WASHINGTON. Stunning Modern House & Guesthouse. 5 Bedrooms. Terrace. Pond. Total Privacy. 9.24± Acres.

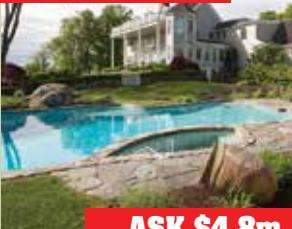
PETER KLEMM EXCLUSIVE



ASK \$5.5m

WASHINGTON. Exceptional Country Estate. 6 Bedrooms. Pool. Tennis Court & Pavilion. 2-car Garage. 12.9± Acres.

PETER KLEMM EXCLUSIVE



ASK \$4.8m

SOUTH KENT. Private Mountaintop Retreat. 7 Bedrooms. Tennis. Pool. Panoramic Views. Trails. 124± Acres.

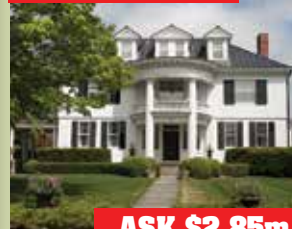
PETER KLEMM EXCLUSIVE



ASK \$3.95m

WASHINGTON. Major Estate. Historic District. Highest Standards of Construction. Guesthouse. Pool. Ponds. 14.28± Acres.

PETER KLEMM EXCLUSIVE



ASK \$2.85m

LITCHFIELD. Rossiter Designed Colonial Revival. 7 Bedrooms. 5 Fireplaces. Oversized Pool & Spa. 1.33± Acres.

PETER KLEMM EXCLUSIVE



ASK \$2.495m

WASHINGTON. Classic Estate. 4 Bedroom Colonial. Guesthouse. Pool. Minutes from the Green. 22.57± Acres.

PETER KLEMM EXCLUSIVE



ASK \$1.995m

GOSHEN. Private Country Estate. 4 Bedrooms. Open Floor Plan. Guest Barn. Stone Patio. 139.69± Acres.

PETER KLEMM EXCLUSIVE



ASK \$1.995m

KENT. Direct Waterfront South Spectacle Lake Contemporary. 4 Bedrooms. Upscale Kitchen. Access to Beach. 3.04± Acres.

PETER KLEMM EXCLUSIVE



ASK \$1.695m

WARREN. 18th Century Antique. 4 Bedrooms. 3 Fireplaces. Screened Porch. Pool. Terrace. Detached Barn. 3.68± Acres.

PETER KLEMM EXCLUSIVE



ASK \$1.15m

WASHINGTON. Exceptional Country Property. 4 Bedrooms. Pool. Studio/ In-law Apartment. 4.02± Acres.

www.klemmentals.com

#1 AGENT OVER \$500 MILLION IN REAL ESTATE SOLD!*

**Source: Commercial Record*

Peter Klemm has been selected as one of the nation's "Top 250 Realtors" for 2015 and ranked one of the "Best Real Estate Agents in America" for 2012, 2013, 2014 & 2015 based on individual sales volume as published in Real Trends/Wall Street Journal Survey. He was also named "Best Real Estate Agent" in the July 2014 Issue of Top Agent Magazine: Eastern USA Edition.



PETER KLEMM
Lifetime Litchfield County Resident

860.868.7313 Ext. 24
peterklemm@msn.com
www.peterklemm.com



KLEMM REAL ESTATE Inc

Litchfield County's Premier Brokers

(860) 435.6789
Lakeville/Salisbury

(860) 567.5060
Litchfield

(860) 354.3263
Roxbury

(860) 364.5993
Sharon

(860) 868.7313
Washington Depot

(203) 263.4040
Woodbury

