



KLEMM REAL ESTATE

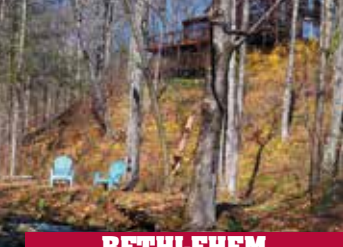
COME LET US SHOW YOU!



PREMIUM & PRIVATE BROKERAGE

THE ONLY LITCHFIELD COUNTY INTERNATIONAL PROPERTY AWARD WINNER YEAR AFTER YEAR 2003-2017

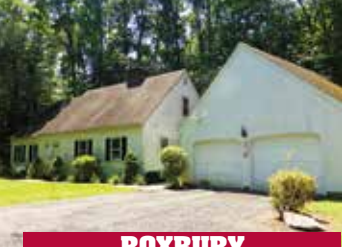
PRICE IMPROVEMENT



BETHLEHEM

Mint Modern Country Cabin. 3 Bedrooms. Fireplace. Deck. Patio. Weekpeemee River Frontage. 4.63± Acres. **\$370,000.** Wendy Westcott. 860.868.7313.

PRICE IMPROVEMENT



ROXBURY

Private Cape. 2 Bedrooms. 2 Baths. 2 Fireplaces. 2-car Attached Garage. Great Location. 2.28± Acres. **\$344,000.** Beverly Mosch. 860.868.7313.

PRICE IMPROVEMENT



ROXBURY

Country Colonial. 4 Bedrooms. Fireplace. Pool. Oversized Patio. Fabulous Views. Professionally Landscaped. 4.53± Acres. **\$1,050,000.** Ceil Santillo. 860.354.3263.

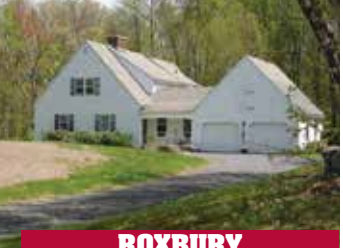
PRICE IMPROVEMENT



ROXBURY

Classic Colonial. 3 Bedrooms. 2 Baths. Fireplace. 2-car Attached Garage. Private Setting. 2.97± Acres. **\$344,000.** Beverly Mosch. 860.868.7313.

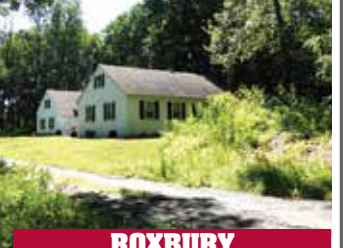
PRICE IMPROVEMENT



ROXBURY

Classic Cape. 3 Bedrooms. 2 Baths. Fireplace. Terrace. Distant View. Desirable Location. 2.44± Acres. **\$344,000.** Beverly Mosch. 860.868.7313.

PRICE IMPROVEMENT



ROXBURY

Spacious Single-level. 3 Bedrooms. 2 Baths. Fireplace. 2-car Attached Garage. Rural Setting. 2.27± Acres. **\$334,000.** Beverly Mosch. 860.868.7313.

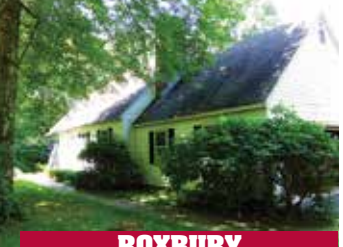
PRICE IMPROVEMENT



ROXBURY

31.56± Acres. 5 Lot Feasibility Test Completed. Several Building Sites. Cul-de-sac Location. Westerly Exposure. Stonewalls. Mature Trees. **\$895,000.** Tim Tierney. 860.868.7313.

PRICE IMPROVEMENT



ROXBURY

Classic Cape. 3 Bedrooms. 2 Baths. Fireplace. Lower-level Walk-out. 2-car Attached Garage. 2.26± Acres. **\$334,000.** Beverly Mosch. 860.868.7313.



NEW LISTING



BRIDGEWATER

Stylish In-town Colonial. 4 Bedrooms. Fully Furnished. Pool. 1.09± Acres. **\$750,000.** Peter Klemm. 860.868.7313.

NEW LISTING



SHARON

Wonderful Ellsworth Colonial. 3 Bedrooms. Fireplace. 2-car Garage. 3.16± Acres. **\$649,000.** Graham Klemm. 860.868.7313.

NEW LISTING



BETHLEHEM

Historic Georgian Farmhouse. 5 Bedrooms. 4 Fireplaces. Pond. 7.02± Acres. **\$550,000.** Beverly Mosch. 860.868.7313.

NEW LISTING



NEW MILFORD

Private Remodeled Single-level. 3 Bedrooms. Fireplace. Covered Deck. Patio. Landscaped Grounds. Garage. Views. 1± Acres. **\$299,000.** Tim Tierney. 860.868.7313.

NEW LISTING



ROXBURY

Private Modern Waterfront. 5 Bedrooms. Fireplace. Pool. Pond. Brook. Professional Landscaping. 90 Minutes to NYC. 3.02± Acres. **\$795,000.** Sally Gorman. 860.354.3263.

NEW LISTING



LITCHFIELD

17.66± Acres. Private Wooded Parcel. Located on Town Maintained Road. Borders State Forest & Parkland. **\$99,900.** Cleve Fuessenich 860.567.5060.

#1 For Selling & Renting Fine Country Properties!

KLEMM REAL ESTATE Inc

Litchfield County's Premier Brokers

860.435.6789
Lakeville/Salisbury

860.567.5060
Litchfield

860.354.3263
Roxbury

860.364.5993
Sharon

860.868.7313
Washington Depot

203.263.4040
Woodbury

Local People/Worldwide Connections

klemmrealestate.com



klemmland.com

Klemmrentals.com

KLEMM REAL ESTATE