

THE ONLY LITCHFIELD COUNTY INTERNATIONAL PROPERTY AWARD WINNER YEAR AFTER YEAR 2003-2020

SOUTHBURY



\$685,000

Custom-built Hunter's Ridge Colonial. 4 Bedrooms. 3.5 Baths. 2 Fireplaces. Pool. Cul-de-sac Location. 1.45± Acres.

WOODBURY



\$395,000

\$1,950/MONTH ANNUALLY

Commercial Building in Main Street Design District. Formerly Professional Office Space. Plenty of Parking. Many Possibilities.

WOODBURY



\$379,900

The Earle Munson House. Currently Multi-Family/Easily Converted to Single-Family. 4 Bedrooms. 5 Fireplaces. 2-car Detached Garage. Main Street Location.

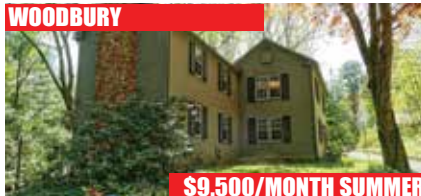
BETHLEHEM



\$50,000

Private Cottage in Kasson Grove Community on Long Meadow Lake. Needs Total Rehab. 2 Bedrooms. 1 Bath. Beach Access.

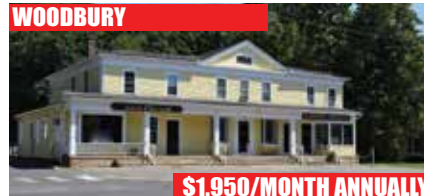
WOODBURY



\$9,500/MONTH SUMMER

Fully Furnished Country Retreat. 4 Bedrooms. 3 Fireplaces. Gunite Pool. Spa. Gym. Pond. Great Location. 20 Minutes to Danbury Train.

WOODBURY



\$1,950/MONTH ANNUALLY

Main Street Business Opportunity. Located on the 50-Yard Line. Previously Antique Shop could be Retail, Small Food Service or Office with Town Approval.

SINDY BUTKUS

Broker Associate

203.263.4040 Woodbury Office

203.232.3723 Cell Phone

sindybutkus@gmail.com

sindybutkus.com

