

**THE ONLY LITCHFIELD COUNTY INTERNATIONAL PROPERTY AWARD WINNER YEAR AFTER YEAR 2003-2020**

**MIDDLEBURY**



**\$1.495.000**

**BRIDGEWATER**

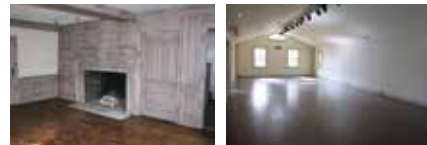


**\$895.000**

**WOODBURY**



**\$595.000**



Exquisite Jewel. 3 Bedrooms. 4 Fireplaces. Quality Construction. Many Amenities. Million Dollar Views. Coveted Location. Includes Adjacent Lot. 7.58± Acres.

Private Modern Colonial. 4 Bedrooms. 2 Fireplaces. Deck. Patio. Professionally Landscaped. Perfect Location. 10.37± Acres.

The Marshall Homestead. Grand Colonial Commercial with Residential Space. Ideal for Antiques, Retail, Office and or Residence. Ample Parking. Main Street Location. 1.06± Acres.

**KLEMM REAL ESTATE** Inc  
LITCHFIELD COUNTY'S PREMIER BROKERS

Lakeville/Salisbury 860.435.6789 > Litchfield 860.567.5060 > Roxbury 860.354.3263  
Sharon 860.364.5993 > Washington Depot 860.868.7313 > Woodbury 203.263.4040



**CLAUDINE McHUGH**

*Connecticut Magazine 2019-2020 Five Star Recipient*

203.263.4040 Woodbury Office

203.228.7000 Cell Phone

claudinemchugh17@gmail.com