



KLEMM REAL ESTATE Inc
Litchfield County's Premier Brokers

PETER KLEMM

2013 YEAR-TO-DATE LISTINGS AND SALES

WASHINGTON, CT

www.klemmrealestate.com

**EXCLUSIVELY/PRIVATELY LISTED & SOLD
SOLD IN ONE WEEK**



**BIDDING WAR
ASK \$2.9m**

WASHINGTON. Contemporary Farmhouse. 4 Bedrooms. Guesthouse. Pool. Open Meadows. 10± Acres.

EXCLUSIVELY LISTED & KLEMM SOLD



ASK \$2.4m

WASHINGTON. Estate Parcel. Secluded Cape. 2 Bedrooms. Peaceful Setting. Family Compound Potential. 53± Acres.

EXCLUSIVELY/PRIVATELY LISTED & SOLD



ASK \$1.65m

WASHINGTON. Shingle-style Colonial. 2 Bedrooms. 2 Fireplaces. Spectacular Setting. View Overlooking Meadows. 3.44± Acres.

**EXCLUSIVELY LISTED & KLEMM SOLD
SOLD IN ONE WEEK**



**BIDDING WAR
ASK \$2.1m**

NEW PRESTON. Traditional Lake Waramaug Colonial. Stone Terrace. Pool. Sweeping Lawn. Boathouse. Dock. 0.78± Acres.

**PETER KLEMM SOLD
HIGHEST WASHINGTON SALE Y-T-D**



ASK \$4.995m

WASHINGTON. James Calhoun House. 5 Bedrooms. 3 Fireplaces. Guesthouse. Party Barn. Gunite Pool. Pond. Views. 30.60± Acres.

**PETER KLEMM SOLD
2ND HIGHEST WASHINGTON SALE Y-T-D**



ASK \$4.25m

WASHINGTON. 7,500sf Contemporary. Located off Washington Green. Pool. Tennis. Guesthouse. Views. Total Privacy.

www.klemmentals.com

COME LET
US SHOW
YOU!

#1 for Selling & Renting Fine Country Properties!

KLEMM REAL ESTATE Inc

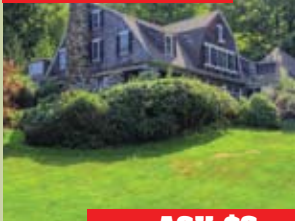
Litchfield County's Premier Brokers



WASHINGTON EXCLUSIVES

www.klemmrealestate.com

PETER KLEMM EXCLUSIVE



ASK \$6m

WASHINGTON/WARREN. Boulders Inn. 500' Lake Waramaug Frontage. Boathouse. Views. 25.83± Acres.

PETER KLEMM EXCLUSIVE



ASK \$4.95m

NEW PRESTON. Lake Waramaug Compound. Pool. 500' Lake Frontage. Boathouse. 6± Acres.

PETER KLEMM EXCLUSIVE



ASK \$4.295m

WASHINGTON. Major Estate. Historic District. Pool. Ponds. 14.28± Acres. Many Amenities.

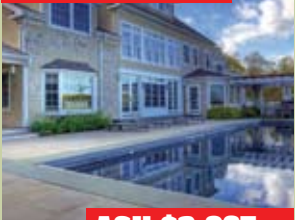
PETER KLEMM EXCLUSIVE



ASK \$3.495m

WASHINGTON. 1890 Queen Anne on Lake Waramaug. Boathouse. Water Frontage. Dock. 1.25± Acres.

PETER KLEMM EXCLUSIVE



ASK \$2.895m

WASHINGTON. Shingle-style Home. Pool. Jacuzzi. Award-winning Landscaping. Views. 11.39± Acres.

PETER KLEMM EXCLUSIVE



ASK \$2.495m

WASHINGTON. Private Compound. 4 Bedroom Colonial. Pool. Guesthouse. Antique Barn. 3 Ponds. 22.57± Acres. Location! Location!

PETER KLEMM EXCLUSIVE



ASK \$1.75m

WASHINGTON. Stylish Country House. 4 Bedrooms. Views. Prime Location. 3.10± Acres.

PETER KLEMM EXCLUSIVE



ASK \$1.25m

WASHINGTON. Lovely Antique. 4 Bedrooms. Studio. Barn/Garage. Pond. Gardens. 17.82± Acres.

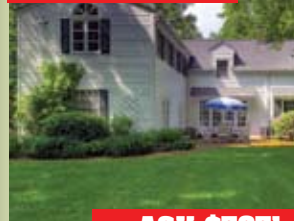
PETER KLEMM EXCLUSIVE



ASK \$795k

WASHINGTON. In-town Colonial. 4 Bedrooms. Attached Garage. Separate Studio/Garage.

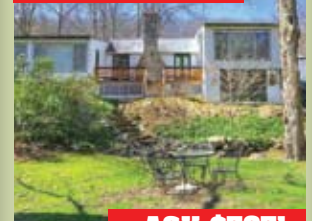
PETER KLEMM EXCLUSIVE



ASK \$595k

WASHINGTON. Charming Colonial. 4 Bedrooms. Pool. In-law Apartment. 3.06± Acres.

PETER KLEMM EXCLUSIVE



ASK \$595k

WASHINGTON. Charming Hansel & Gretel Style Home. 3 Bedrooms. Rushing Brook. 3.7± Acres.

#1 AGENT OVER \$500 MILLION IN REAL ESTATE SOLD!*

**Source: Commercial Record*

Peter Klemm has been ranked one of the "Best Real Estate Agents in America" for individual sales volume as published in the 2013 Real Trends/Wall Street Journal Survey. He was also selected among the nation's "Top 250 Realtors" for individual sales volume as published in the 2012 Real Trends/Wall Street Journal Survey.



PETER KLEMM
Lifetime Litchfield County Resident

860.868.7313 Ext. 24 Office
peterklemm@msn.com
www.peterklemm.com



KlemmRealEstate.com

KLEMM REAL ESTATE Inc

Litchfield County's Premier Brokers



KlemmRentals.com

(860) 435.6789
Lakeville/Salisbury

(860) 567.5060
Litchfield

(860) 354.3263
Roxbury

(860) 364.5993
Sharon

(860) 868.7313
Washington Depot

(203) 263.4040
Woodbury

www.klemmrentals.com

